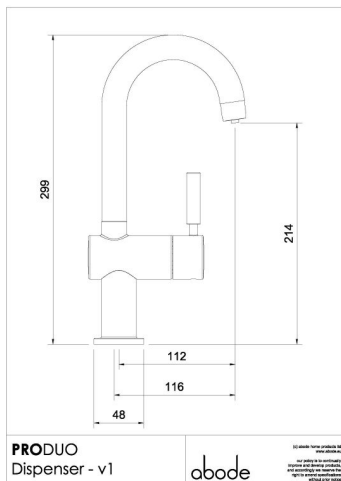


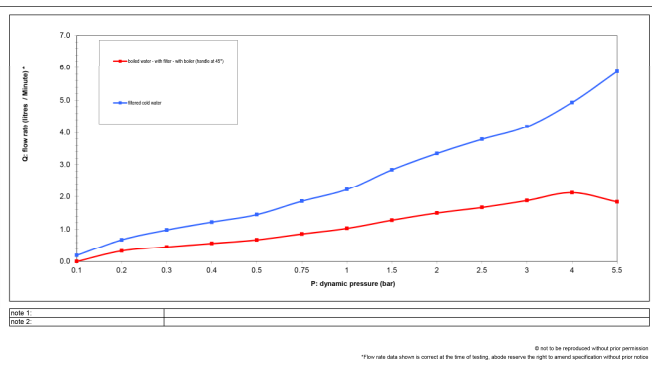


**PRONTEAU tap features:**

- Stylish dispenser delivering both 98° (variable) filtered water and domestic cold filtered water
- Safety lock hot handle
- A modern design classic style
- 360° cool touch spout thanks to centrally insulated steaming water channel
- Scale inhibiting filter cartridge included
- 5 Year Warranty\*



- **Overall Height / projection:** 299 mm
- **Exit spout reach:** 116 mm
- **Exit spout height:** 214 mm
- **Base diameter(s):** 48 mm
- **Recommended hole diameter:** Ø35 mm
- **Max. surface installation depth:** 50 mm
- 60mm from centre of tap hole to wall/backplash behind wall (Handles rotate backwards 45°)



**PRONTEAU flow information and connectivity:**

- **Min cold water pressure requirement:** 1.5 bar
- **Recommended / Maximum (domestic) hot water temperature:** 46°C / 70°C
- **Part G - Mixed flow rate at 3 bar (litres/min):** 4.45
- **Control valve type:** 1 x Ceramic disc HT diverter
- **Product flow characteristics:** Dual flow
- **Hot and Cold inlets:** Flexible hose connections supplied
- **Non return valve(s):** None

**Care instructions and Warranty Summary\***

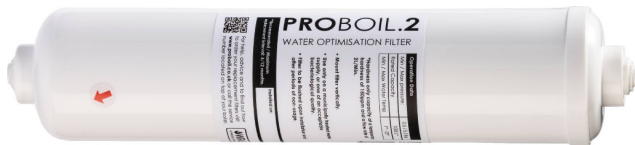
- Clean the tap regularly as required, using a mild soap and damp cloth, do not use any other cleaners, regular cleaning will prevent the build-up of lime scale and dirt
- Maintain the heater according to the user guide, for example replace filter and descale when required.
- Mixertap materials and workmanship defects warranted for 5 years
- Proboil2X materials and workmanship defects warranted for 2 years
- Mixertap valves and working parts warranted for 5 years
- Surface finish warranty defects warranted for 1 year
- All o-rings, hoses & gaskets warranted for 1 year



#### PROBOIL.2X features:

- Controllable tank temperature range from 75°C (holiday/eco mode) to 85,90,95,96, 97, 98°C using the touch screen controls.
- 2.1 Litre capacity tank, apx. 7 minutes reboil after use
- On screen filter life / replacement indicator
- Intelligent self-diagnostic control
- No external drain connection needed for a simplified and more flexible installation
- Flow limited to 2 litres/min to limit splashing and ensure a smooth flow
- Tool free, hand tight connectors to speed up installation, maintenance and descaling
- Compact size 22x22x28cm
- 2 Year Warranty\*
- WRAS approval pending

All temperatures quoted are measured within the tank of the boiler and actual spout exit temperature may vary dependant on local conditions and tap model.



#### PROBOIL.2 filter features:

- Filtered 98°C drinking water, engineered specifically for hot water applications
- Included with every PROBOIL.2X system
- Recommended replacement interval 6 months
- Chlorine taste and odour reduction
- Scale reduction for better drinks and tank protection
- WRAS approved



#### The complete package:

Each PRONTEAU system includes:

- A stylish PRONTEAU dispenser
- PROBOIL.2X hot water boiler
- PROBOIL.2 scale control filter & assembly
- Comprehensive user and installation guide
- Nationwide professional maintenance and service support